



# Paekakariki Clubhouse Project

## January 2020



**Protecting our community  
in the water**

*In it for life*



**SURF LIFE SAVING**



**PAEKAKARIKI SURF  
LIFEGUARDS (Inc.)**

# WELCOME

# INTRODUCTIONS

*In it for life*





**SURF LIFE SAVING**



**PAEKAKARIKI SURF  
LIFEGUARDS (Inc.)**

## CLUB PROFILE

- Formed in 1913
- Membership 250 – 150 nippers
- Family oriented club
- Provides lifeguarding services on the Kapiti Coast and for other community events
- Current clubhouse built in the mid 1960's
- Over 3000 patrol hours each year

*In it for life*



# Why the need for new Clubrooms

- Structural condition of existing building  
(August 2011 report by Sawrey Consulting Engineers)
- Existing building not adequate for present & future needs
- Expiry of existing ground lease & GWRC policy to retreat buildings/structures away from foreshore due to advancing sea



# What are the club needs now and in the future

- Scoping undertaken by Lumin (October 2011)
- Need for much larger & more flexible space to accommodate increased club membership
- Changes in type & amount of equipment, to meet operational needs
- Allow sharing of facilities with emergency & other community-based activities

*In it for life*

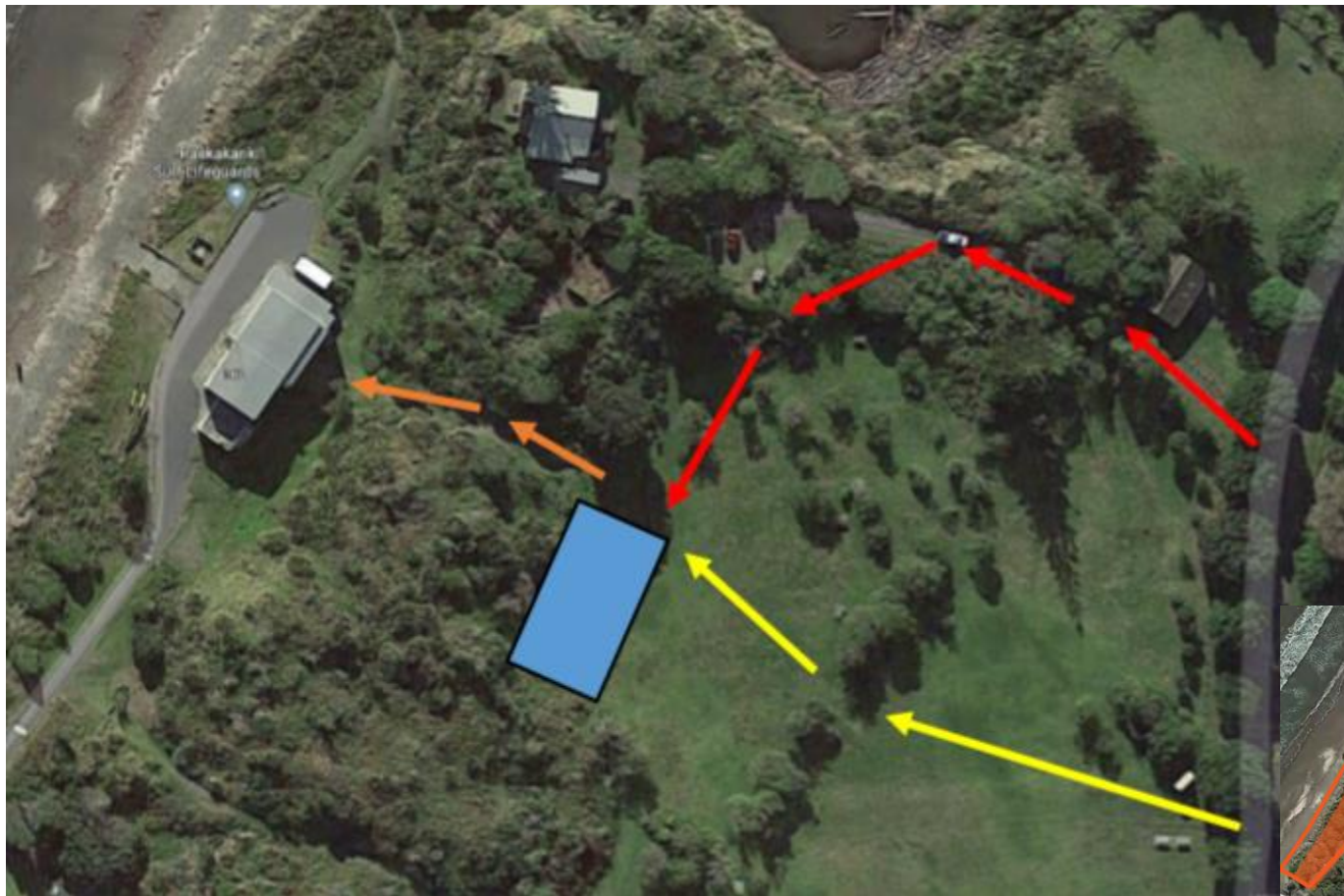


## What location options & factors have been considered?

- Availability of sites within Queen Elizabeth Park & elsewhere in Kapiti
- Proximity & ease of access to beach
- Resource Management & District Plan issues (zoning, environmental matters including ecological & historical sensitivity)
- Impact on existing use of site & surrounds
- Impact on neighbours
- Support of GWRC officers for grant of ground lease



# Where are we looking to build?



PAEKAKARIKI SURF  
LIFEGUARDS (Inc.)



SURF LIFE SAVING

Protecting our community in the water

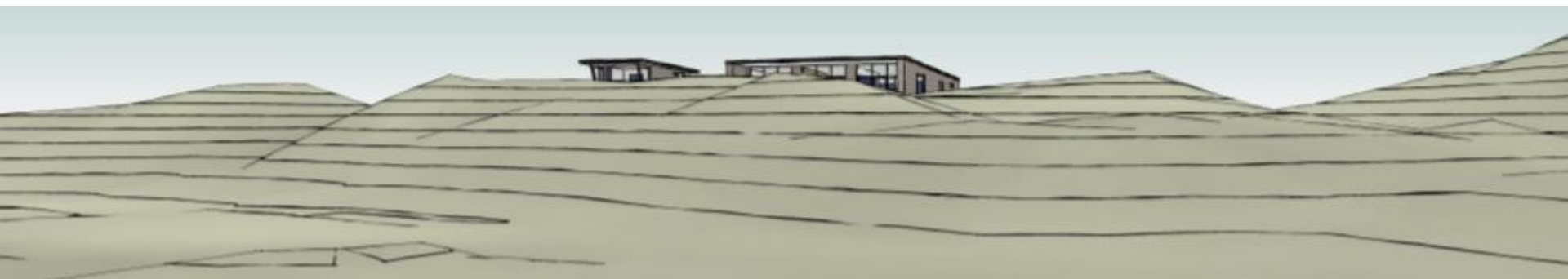
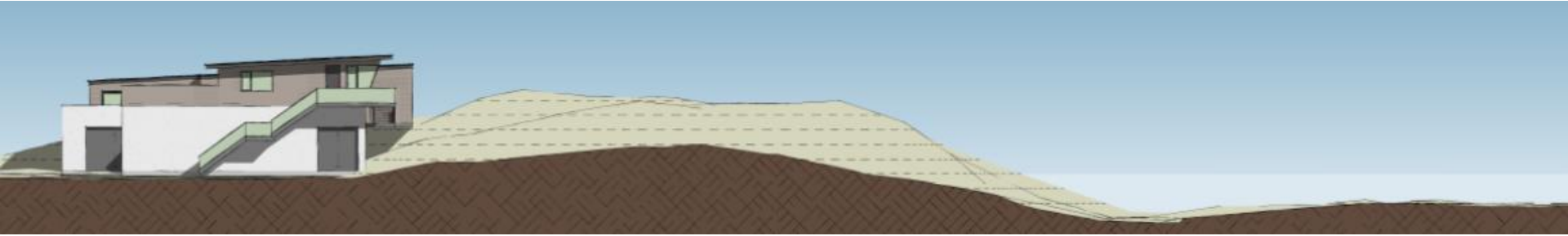
*In it for life*

# What form might the building take?





# What form might the building take?



PAEKAKARIKI SURF  
LIFEGUARDS (Inc.)



SURF LIFE SAVING

Protecting our community in the water

*In it for life*

# What form might the building take?



# What form might the building take?





# What form might the building take?



## Process and Timelines

- Neighbor & community dialogue  
*(formal consultation at consent phase)* Early 2020
- Lease Application March 2020
- Finalise plans & costing 2020
- Fundraising 2020-2022
- Further consultation and planning 2020-2021
- Consent Process 2021
- Construction commences April 2022

# What does Paekakariki Surf Lifeguards need

- **Community Feedback & Support**
  - Feedback about the project and design
  - Any community use
  - Letters of support for the concept
- **Fundraising**
  - Project will cost about \$3 million
  - We will need cash
  - Need contacts for people that can provide services
- **Expertise**
  - Need volunteer project managers
  - Assistance with consent process
  - Assistance with fundraising
  - Construction project manager





PAEKAKARIKI SURF  
LIFEGUARDS (Inc.)



Protecting our community  
in the water

*In it for life*

# Questions